

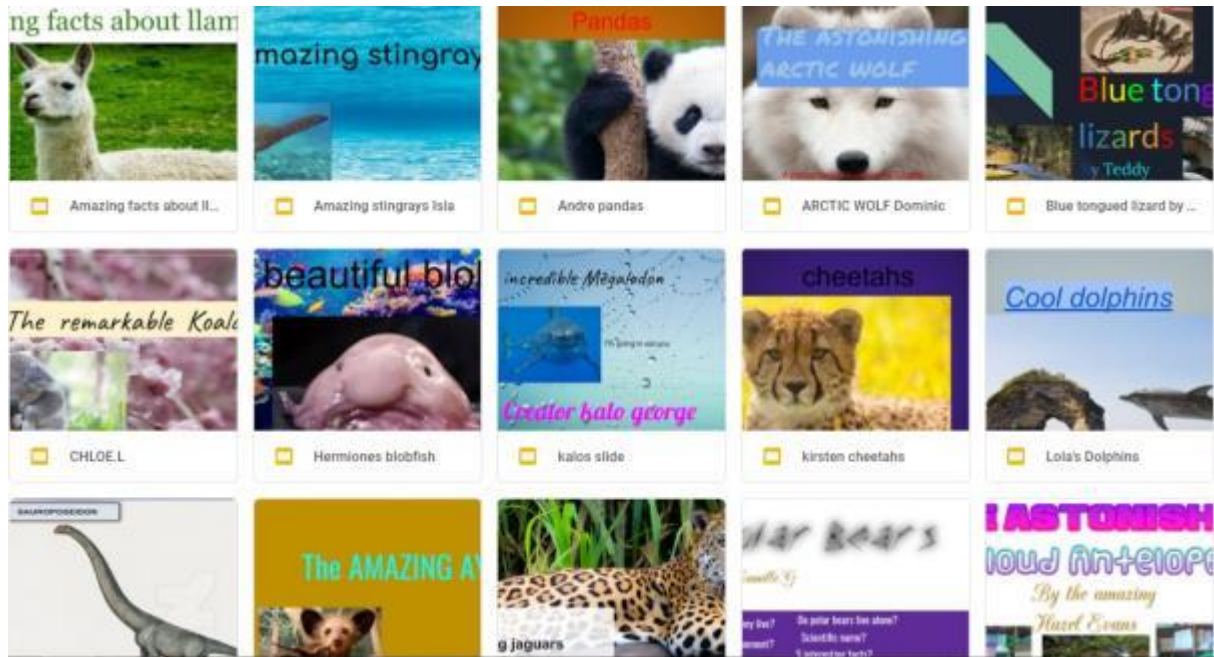
St Brigid's School Newsletter



Email: office@stbrigidsdn.school.nz
Website: www.stbrigidsdn.school.nz

57 Bayfield Rd
Dunedin 9013
Telephone (03) 454 3477

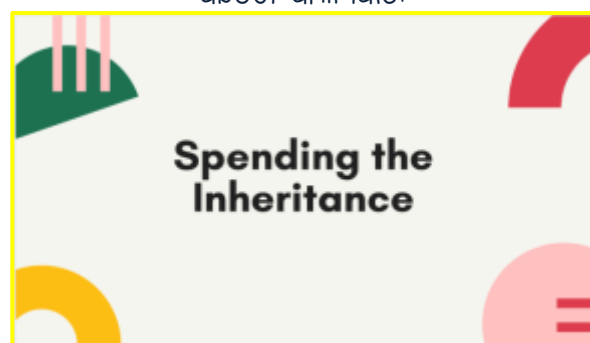
ROOM / CLASS REPORT



Room I has been so excited to be back at school finally and it's been amazing to have brand new Chromebooks to use!

We've been learning lots of new skills and transferring some of the skills we already know into a new context.

For Reading we've been developing our skimming and scanning skills and in writing we've been working on paragraphs through our projects about animals!



We've been researching animals, writing and creating a Google Slides presentation about them and we'll be presenting them next week.

We've found out some super interesting facts about animals that we didn't know before.

You won't believe what happened to us in Maths!! We inherited 500,000 pounds from a long-lost relative! So we had to convert the money into NZD before we spent it and now we're researching and buying various items like a house, car, furniture etc. WOW we did not realize how expensive things are! It's been interesting making sure we've got enough money to buy our dream items.

In RE we have been learning about the Holy Spirit through the Sacrament of Baptism. We've been talking about how the Holy Spirit helps us to make good choices.

In PE we've been in groups with the rest of the school working on skills like walking, running and dodging so far.

Love from Room I

Principal's Message

Tena kotu

I have been thinking about what make an authentic Catholic school and Catholic education.

"First and foremost every Catholic educational institution is a place to encounter the living God who in Jesus Christ reveals his transforming love and truth." (Pope Benedict in Catholic Education of school age children NZBC)

Catholic schools only exist because of the person of Jesus Christ. If Christ is not at the centre then the school cannot be Catholic. How the school reflects the life of Jesus Christ is something, which is unique to the charism, culture, and tradition of that particular Catholic community.

Catholic schools must offer a deeper message to the popular message and must be authentic and be prepared to offer alternatives for its community offering opportunities to nourish the community spiritually rather than materially.

An answer to this is to align everything in the school with our shared vision. The school could examine its charter, strategic plan, and annual plans to see how far these documents align with the current practices of the school.

This alignment is a key area for Catholic authenticity; it is when we give plausibility to all we believe in and authentic Catholic schooling means placing Jesus Christ in every area and every level of the school.

Andrew



School Values



Congratulations to the following students who were recognised as living the value of Atawhaitia – Care.

Room 4 – Ashreya Prasad

Room 3 – Nahoa Fox

Room 2 – Mason Voyce

Room 1 – Dominic Cheng



St Brigid's House Groups

Congratulations to **Aubert House** who were the winning House this week.

House Token Winners this week were:

Aubert House: Maddex Porter

McAuley House: Nahoa Fox

de Paul House: Brianna Baltar-Boorer



Dates to Remember

What's On This Week?	
Wed 17 June	BOT Meeting at 6pm
Fri 19 June	Mass 10am – Room 2
Sun 21 June	Parish/School Mass 9:30am at St Pat's
What's On This Term?	
Fri 26 June	Mass 10am – Room 3
	Assembly Rm 4 at 2:40pm in Hall
Fri 3 July	Mass 12pm – Whole School – note change in time.
	Last Day of Term 2
Mon 20 July	Term 3 Begins

Sports News

Winter Sports Update: Thank you to everyone who registered for Kiwihoops and Netball. We are sorting through registrations and will notify every one of their teams in the next week or so. We might not be able to register a team in every section, apologies in advance.

Some Important Reminders...

Some Important Reminders...

- ✚ **Sickness** – if your child is unwell please keep them at home. If you are concerned about your child's health you should contact your GP or Healthline.
- ✚ **Jerseys / Jackets:** all children should be coming to school now with a jersey and jacket.
- ✚ **Drink Bottles:** in line with school policy drink bottles should only contain water, no juice, cordial or fizzy please.
- ✚ **Parking:** we have received a number of phone calls regarding parking on Bayfield Road. Please refrain from parking on yellow lines and across driveways as this is very unsafe and illegal.

R E Comment

Trinity Sunday

Many symbols try to explain and represent the Trinity. This symbol is the Triquetra, an early Trinitarian design found especially in Great Britain.

For Catholics its three equal arcs represent equality, its continuous line expresses eternity and the interweaving represent indivisibility.



Baptism

If you are interested in getting your child Baptised or would like to arrange a time to come and find out more about this Sacrament and what it means please contact the School Office.

PTA News

- ◆ Next Meeting/AGM – to be confirmed.

BOT News:

- ❖ The next Board meeting will be held on Wednesday 17 June at 6pm.

St Brigid's Level 1 Important Information

New Zealand has made great progress in containing COVID-19! Moving into Alert Level 1 this week was a huge milestone for us as a nation, well done everyone! However with the cold and flu season upon us, it is still important that we remain vigilant and continue to practise good hygiene, such as regularly washing and drying hands as well as sneezing and coughing into elbows.

School Assembly: We are very excited to be able to gather together and celebrate our Shared Prayer with the school community again in Level 1. We are able to hold one Assembly this term hosted by Room 4 on Friday 26th June at 2.40pm in the School Hall. Everyone is welcome!

Drop Off and Pick Up: These new changes will take effect from Monday 15th June.

Morning Drop Off will continue to be from 8.30am. A staff member will be at the bottom of the driveway to greet tamariki every morning between 8.30am and 8.45am. You are also more than welcome to walk your child up the driveway in the mornings if you would like to. Please note that classrooms will not be open until 8.45am. However the School Hall will be open from 8.30am to keep children warm and dry.

Afternoon Pick Up we will only be doing Driveway Duty to Bayfield Road, a staff member will no longer be walking children up to Silverton Street. At the end of the school day you are welcome to walk up the driveway or walk down from Silverton Street and wait for your tamariki outside the classrooms.

Driveways we ask that you do not drive down Silverton Street Access as this is a Private Road. We would also appreciate if you did not drive up the school driveway between 8.30am – 9.15am and 2.45pm – 3.15pm as these are very busy foot traffic times.

NZ COVID Tracer App we are supporting contact tracing by having QR code posters in the office and hall if you wish to keep a track of your own movements – so if you haven't already downloaded the App the Ministry of Health's [NZ-COVID Tracer app page](#) has information to help you do that.

Friday Masses began again this week. Room 1 and 4 went today, Room 2 are next week and Room 3 the following week. It is great to be able to celebrate Mass again. On the last day of term we are going to have Mass at 12:00. More details to follow!

Parish School Mass next Sunday, 21st June, is going to be a Parish School Mass at 9:30am at St Patrick's. We look forward to seeing you all there.

Parent / Teacher Discussions this term (in accordance with MOE recommendations) we have opted to have a post COVID Catch Up rather than written reports. These will be held on Monday 22nd June and Wednesday 24th June between 3pm – 6pm. We are not reporting on curriculum levels at these discussions. Please complete the Google Form by 5pm on Tuesday 16th June (see link below). From Wednesday next week a confirmation slip will be sent home with your time. NB – School closes at 3pm on both days.

https://docs.google.com/forms/d/1ogHtr6m2h2_MNC6BURC2iKdiDUTVWIfEEJ7JnX6TBY/edit

Kind regards –

Andrew Pozniak & Deborah Charleson

A new COVID-19 government website [Kia Kotahi mō te WHAIORANGA | Unite for the RECOVERY](#) replaces the previous 'Unite against COVID-19' website. Its three key sections are:

1. **COVID-19** – Learn about the virus and what we all need to do.
2. **Wellbeing** – You're not alone. Find the support you need.
3. **Jobs and Training** – Get careers, training and upskilling help.

Community News



Contact Us
 Email: coach@playball.co.nz
 Mobile: 027 954 8899
 Like us on 



Presenting Dunedin's most EXCITING Winter Holiday Programme at Bayfield High School!

Week 1: Monday 6th – Friday 10th July
Week 2: Monday 13th – Friday 17th July

We bring you a holiday programme with a **DIFFERENCE**. Playball is Dunedin's **PREMIERE** sport and movement programme for preschool & primary school children, teaching them 8 different sports through structured games.

Using our signature **EXPERTISE** and **STRUCTURE** we present a programme which involves Athletics, Netball, Dodge ball, Touch Rugby, Hockey, T-Ball, Cricket, Basketball and Soccer.

Our Trip days include: Leap Dunedin, MegaZone, Bowl Line & Reading Cinemas!!

Highlights include: Playball Party Day, Super Hero Day, Lego, Star Wars Day & Lots more!!!

Don't miss out! Book today at PlayballDunedin.aimyplus.com

Playball Dunedin Price List

Full Week (9am–4pm) **\$205**
 School Week (9am–4pm) **\$165**

Full day **\$40**
 Full Trip day **\$55**

School day **\$35**
 School Trip day **\$45**

Half day from 8am to 1pm or 1pm to 6pm from **\$30**
 (Half day option not available on trip days)

Prices Excl of GST

WINZ Subsidies available

Dunedin Public Library

All our libraries are open and under Alert Level 1 we are gradually increasing the services which are available. As of Monday, 15 June, all libraries will be back to their usual opening hours and services.

Customers have already been able to return and borrow library items, and access scanning and photocopying facilities, and free wifi. At level 1, customers can now visit our Heritage Collections in the City Library and access the free public access internet computers and newspapers. All seating has now been returned to libraries.

Until 15 June, the libraries' opening hours are:

City Library
 Monday – Friday 10am-4pm,
 Saturday 11am-3pm

South Dunedin
 Tuesday – Friday 11am-4pm

Let's play!



MAT
TENNIS COACHING

HOT SHOT COACHING & MATCH PLAY

Location Edgar Centre 3:45pm - 4:30pm

Friday 19th & 26th June coaching, followed by the 3rd July match play.

\$20 for all 3 sessions, plus entry \$4.50 to the Edgar.

RED BALL 5-8 years

ORANGE BALL 9-11 years

Closing entry date 17th June

CONTACT: Mat McCutcheon 0273261816 or matty-mccutcheon@hotmail.com



School Bank Account Details *(Please ensure you deposit any money into the correct account)*

Board of Trustees - School Account:
 06 0942 0045712 00

PTA – Fundraising Account:
 03 1732 0001257 00